

Toodyay Convict Depot Walk

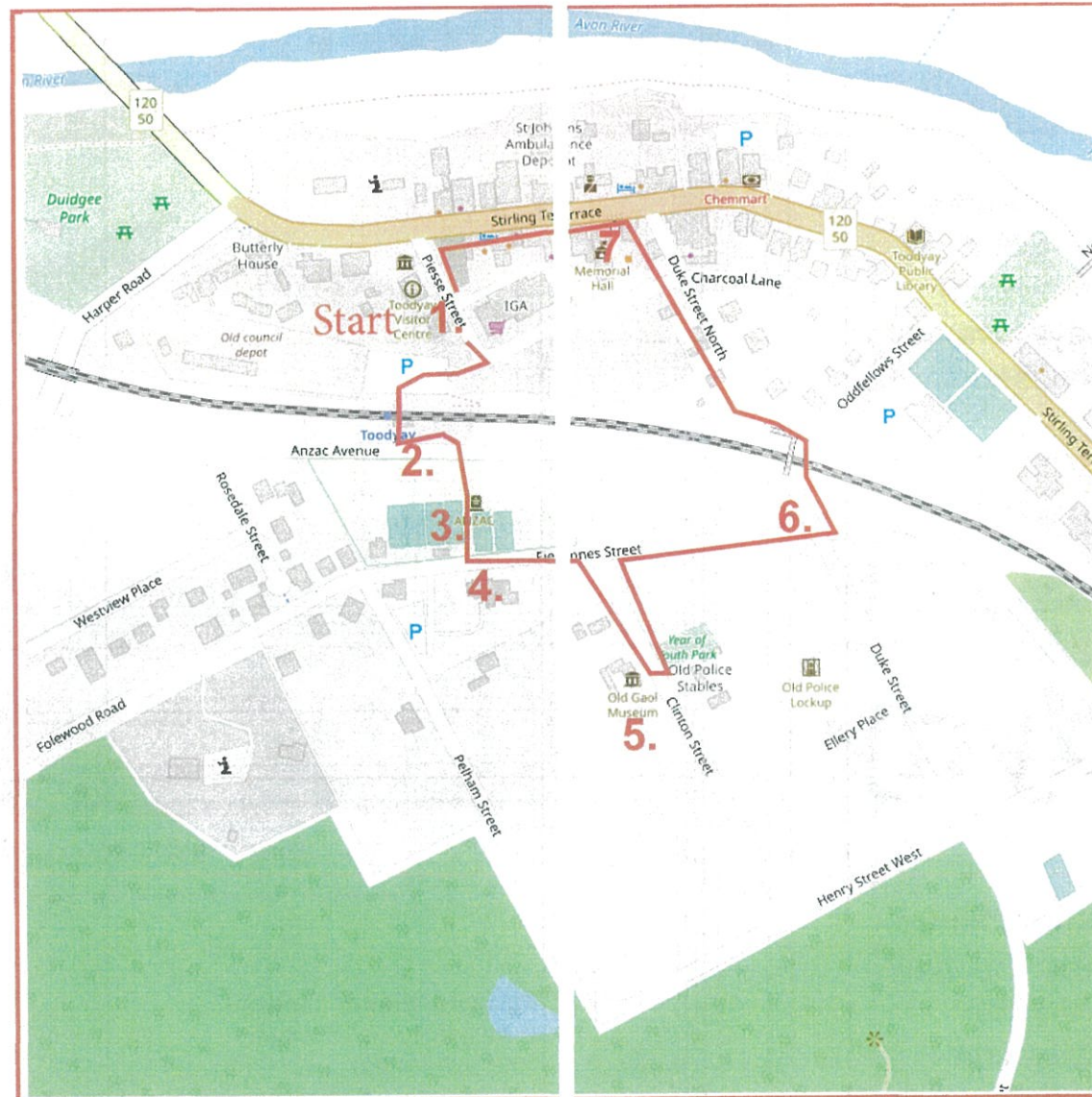


1.37km walk:

7 Interpretive signs

1. Introduction
2. Depot Superintendent's House
3. Depot Operation
4. Central Depot Site

5. Role of Military & Police
6. Pensioner Guards
7. Moondyne Joe



**Please watch out for trains before crossing the railway track

Half hour walk, starts and finishes at the Toodyay Visitors' Centre

Allow an extra half hour to visit the Newcastle Gaol Museum at the half-way mark



Broadarrow trail markers

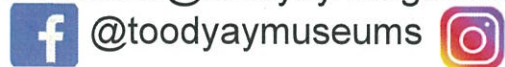
Toodyay Convict Depot Walk

Toodyay Museums

(08) 9574 9393

www.toodyay.com

museums@toodyay.wa.gov.au



Toodyay Visitor Centre

7 Piesse Street, Toodyay

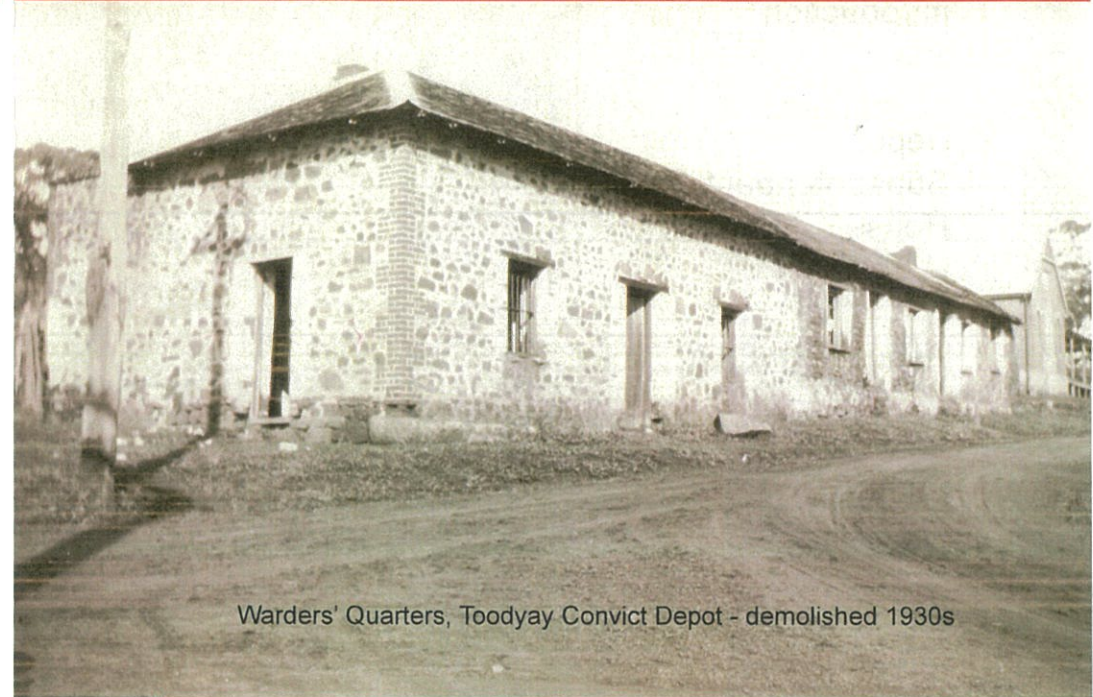
(08) 9574 9380

www.toodyay.com

visitorscentre@toodyay.wa.gov.au



Toodyay Convict Depot Walk



Warders' Quarters, Toodyay Convict Depot - demolished 1930s

Step back into convict era Toodyay!

Toodyay Visitor Centre

7 Piesse Street, Toodyay

(08) 9574 9380

www.toodyay.com

visitorscentre@toodyay.wa.gov.au

